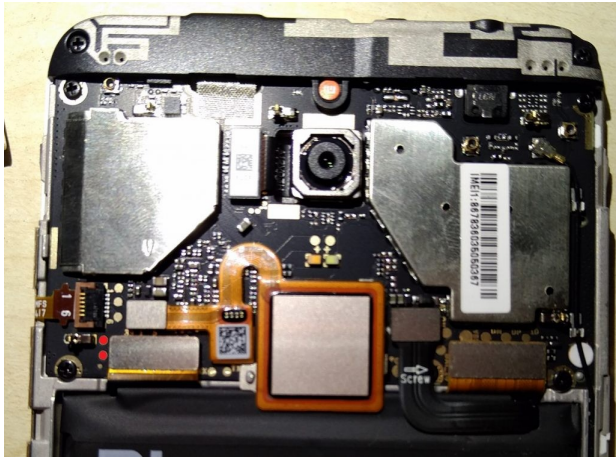


How to Reset Mi Account Qualcomm Models

Example : Redmi Note 5 Pro

Attention! This Process Will not work on Android 9 Devices

You need Put this device to Flash mode its Mean QdLoader 9008 EDL Mode
Some devices need doing Testpoint for force EDL mode, You can see
TestPoint pics at Hydra TP Folder, Example of Redmi Note 5 Pro TestPoint



You will see QdLoader 9008 Port at device manager, if you not see it
Install EDL Drivers which available at support area

Run HqTool.exe from Humtool, Untick Auto then Select Brand and Mode,
From top right Change connection as Flash Mode, Tick Xiaomi Account then Click Excute

Hydra Qualcomm Tool Ver 1.0.1 Build 32 - Windows 10 (Version 10.0, Build 14393, 64-bit Edition)

Powerful Advanced Complete

Device Manager Port Qualcomm HS-USB QDLoader 9008 (COM3)

Brand : XIAOMI Model : Redmi Note 5 Pro (Whyred) Auto

FHLoader : mi_2_9_elf AUTO

Update DB Support Area Connection Flash Mode

Reboot Fastboot To EDL

Service Flash Tool PM Extra INFO

Tool Repair/Calibration Backup Format

Operations

- Read Info
- Screen Lock Security
- Xiaomi Account
- Format Userdata/Factory Reset
- Ultra Power Option [Format User + Remove FRP]
- Set Bootable Drive
- Security Partitions
- Factory Reset Protection (FRP)
- FRP ZTE [FTM]
- Generic Qualcomm Bootloader
- Xiaomi Bootloader
- Patch Boot
- Switch to Global (Xiaomi)
- Erase all Flash
- Sim/Network Security

Method/Option Remove MiAccount[Erase Method]

Auto Restart Device Execute

EDL_Resetting Mi Account...

Backing up Partition for safety...Ok

Scanning Patching address...

- > Patching address detected [PATCHED]
- > Patching address detected [PATCHED]
- > Patching address detected [PATCHED]
- > Patching address detected [PATCHED] Done!!

Total Items patched : 4

Successfully patched address..Ok

All Done

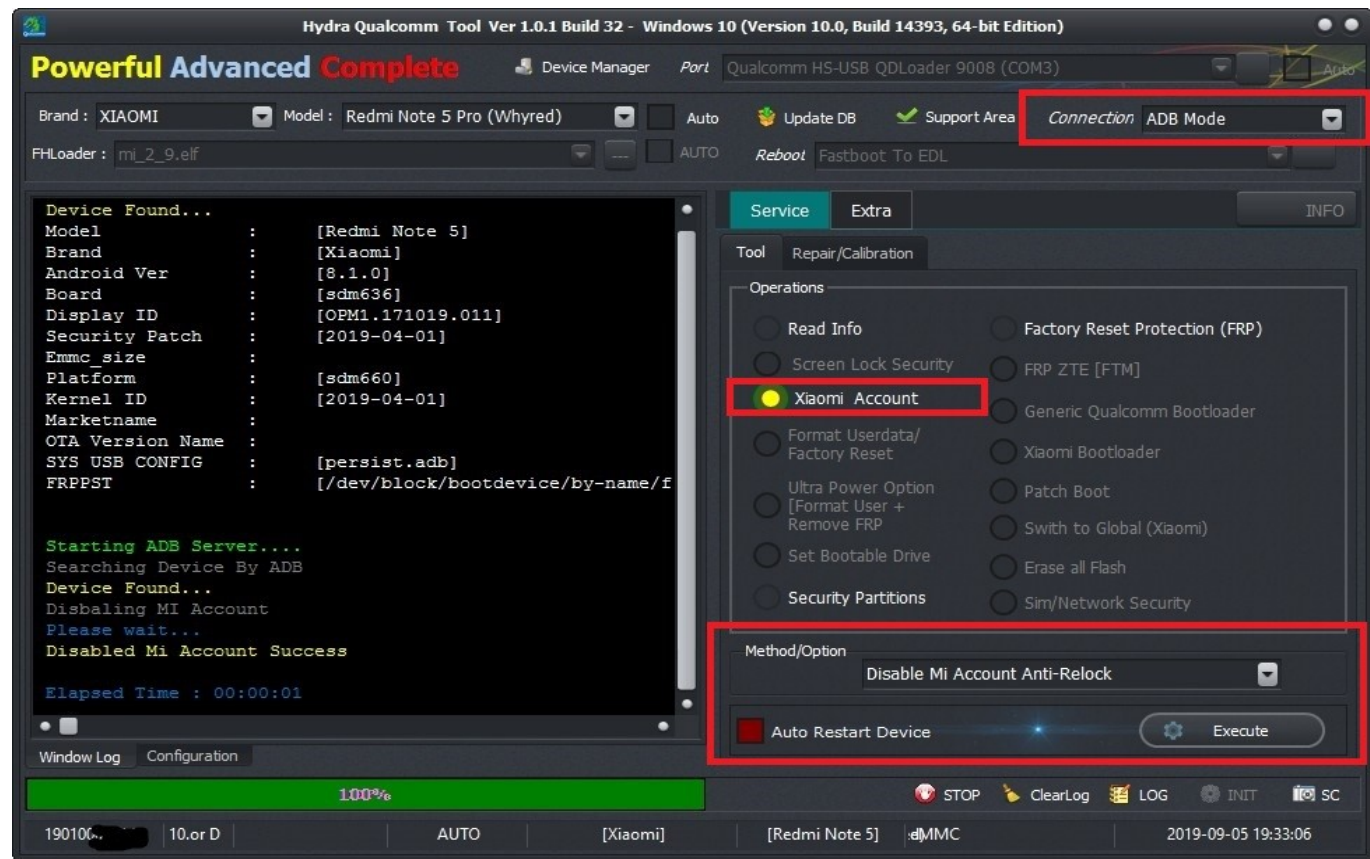
Elapsed Time : 00:00:22

Window Log Configuration

99%

190100C 10.or D AUTO XIAOMI Edmi Note 5 Pro (Whyred)MMC 2019-09-05 13:25:21

After This operation successfully, Reboot the device manually, setup device, **Please do not Connect Wifi !** Another step is stuck, after setup device, enable adb (usb debugging), From top right of the Tool connection select "ADB Mode" Tick Xiaomi Mi account and click Excute.



**if you not doing adb operation device will relock after connect wifi,
Android 9 Not support yet !! You can downgrade it if Android 9 and Android 8 exist**