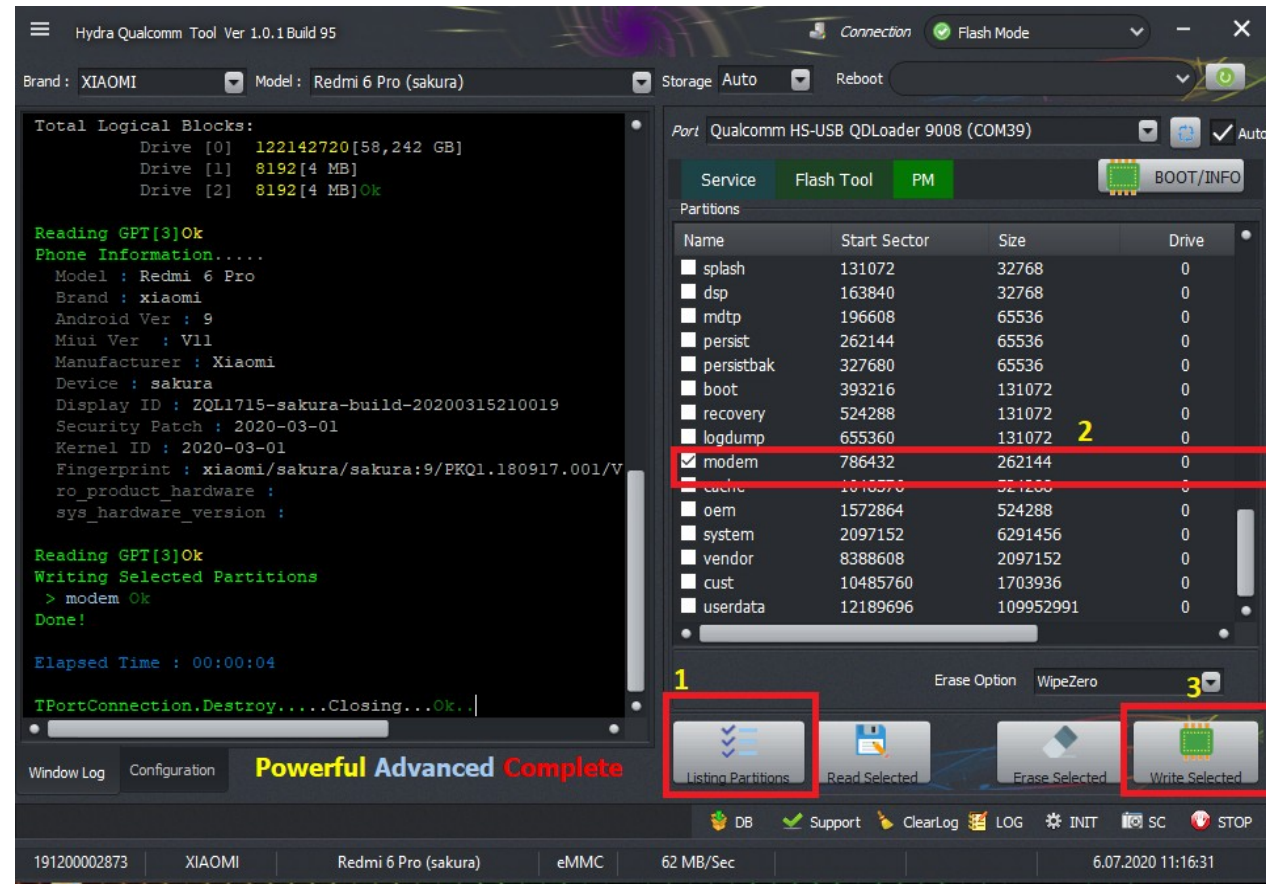


Xiaomi Redmi 6 Pro Sakura Repair Dual IMEI

Go to Hydra Tool Support Area, Go to Firmwares -> Xiaomi -> Redmi 6 Pro (sakura) -> Repair IMEI Path Download files.

Run Hydra Qualcomm Module, Select Brand and Model, Deattached back cover of device for Testpoint. Go to PM (Partition Manager Tab) and Click List Partitions.

Tick Modem and Select Repair IMEI Modem from filename, and Click Write Partition Buton.



After write Repair IMEI Modem, Turn on the Device, Go to Dial Screen and Dial *##*13491##* or *##*717717##* for Enable Diag, Connect USB cable, From Hydra Qualcomm Module Select "**Connection : Dignostic**" from top right of the Software

Go to Repair / Calbritation Tab, Fill IMEI 1 and IMEI 2, Select Diag Port and Click Write IMEI, May you need Repeat this process few times until it write imei.

After Repaired IMEI You will need write Stock Modem by EDL Mode file for fix Network.