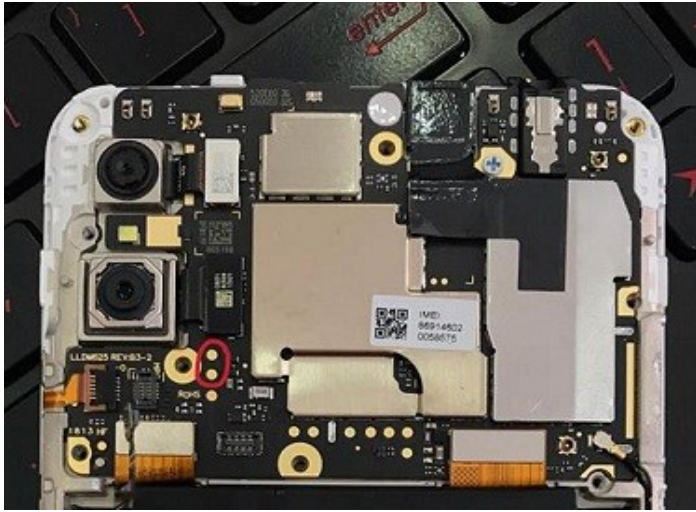


# How to Repair IMEI Redmi S2 & Y2 Without Unlock Bootloader and Root ?

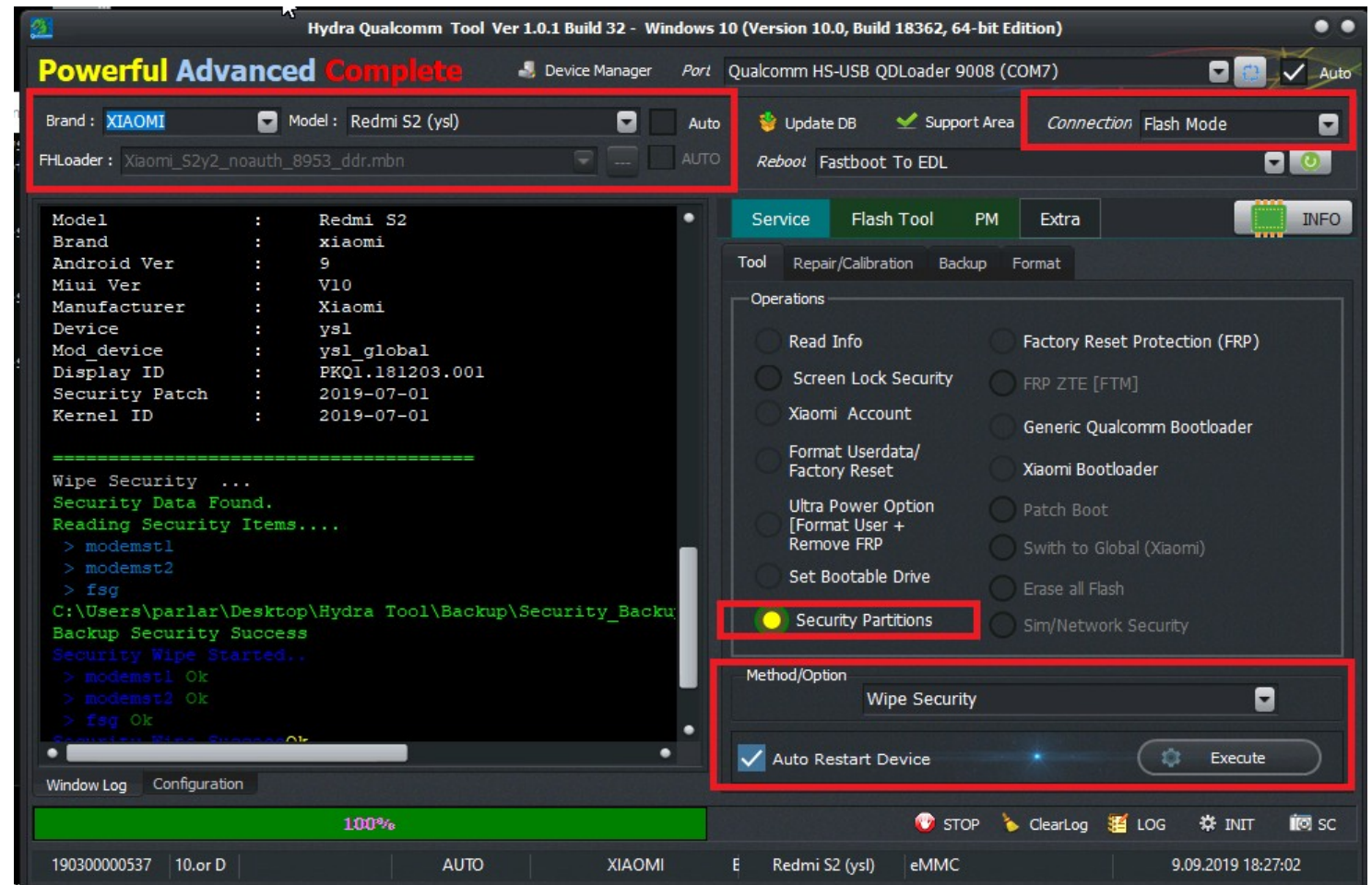
## Only 2nd IMEI Supported!!

You need Put this device to Flash mode its Mean QdLoader 9008 EDL Mode  
Some devices need doing Testpoint for force EDL mode, You can see  
TestPoint pics at Hydra TP Folder, Example of Redmi S2/Y2 TestPoint



You will see QdLoader 9008 Port at device manager, if you not see it  
Install EDL Drivers which available at support area

Run Qualcomm Module from Humtool, **Untick Auto then Select Brand and Model**,  
From top right **Change connection as Flash Mode**, Tick **Security Partitions**,  
Select Method **Wipe Security** then Click Excute

A screenshot of the 'Hydra Qualcomm Tool Ver 1.0.1 Build 32' software interface. The window title is 'Hydra Qualcomm Tool Ver 1.0.1 Build 32 - Windows 10 (Version 10.0, Build 18362, 64-bit Edition)'. The interface is divided into several sections. At the top, there's a 'Device Manager' section showing 'Qualcomm HS-USB QDLoader 9008 (COM7)'. Below this, there are fields for 'Brand: XIAOMI', 'Model: Redmi S2 (ysl)', and 'FHLoader: Xiaomi\_S2y2\_noauth\_8953\_ddr.mbn'. A 'Connection' dropdown menu is set to 'Flash Mode'. On the right, there are buttons for 'Update DB', 'Support Area', 'Reboot', and 'Fastboot To EDL'. The main area is split into a left pane with a terminal window and a right pane with operation options. The terminal window shows the command 'Wipe Security ...' and the output 'Security Data Found. Reading Security Items...'. The right pane has a 'Security Partitions' option selected with a yellow dot. At the bottom, there's a 'Method/Option' dropdown set to 'Wipe Security' and an 'Execute' button. The status bar at the bottom shows '100%' progress and various control buttons like 'STOP', 'ClearLog', 'LOG', 'INIT', and 'SC'. The bottom status bar also displays '190300000537', '10.or D', 'AUTO', 'XIAOMI', 'E', 'Redmi S2 (ysl)', 'eMMC', and '9.09.2019 18:27:02'.

Device will reboot, if not do it manually Please, Lets go step 2

Enable ADB [USB Debugging], if you do not know how to do it follow these steps :

How to Enable Developer Option & USB Debugging in Xiaomi phones ?

If you know this you can skip this part.

Step 1:- Open your Redmi Note 6 Pro and Click on settings. From there, click on About Phone option. You can see About phone section on the top of the settings.

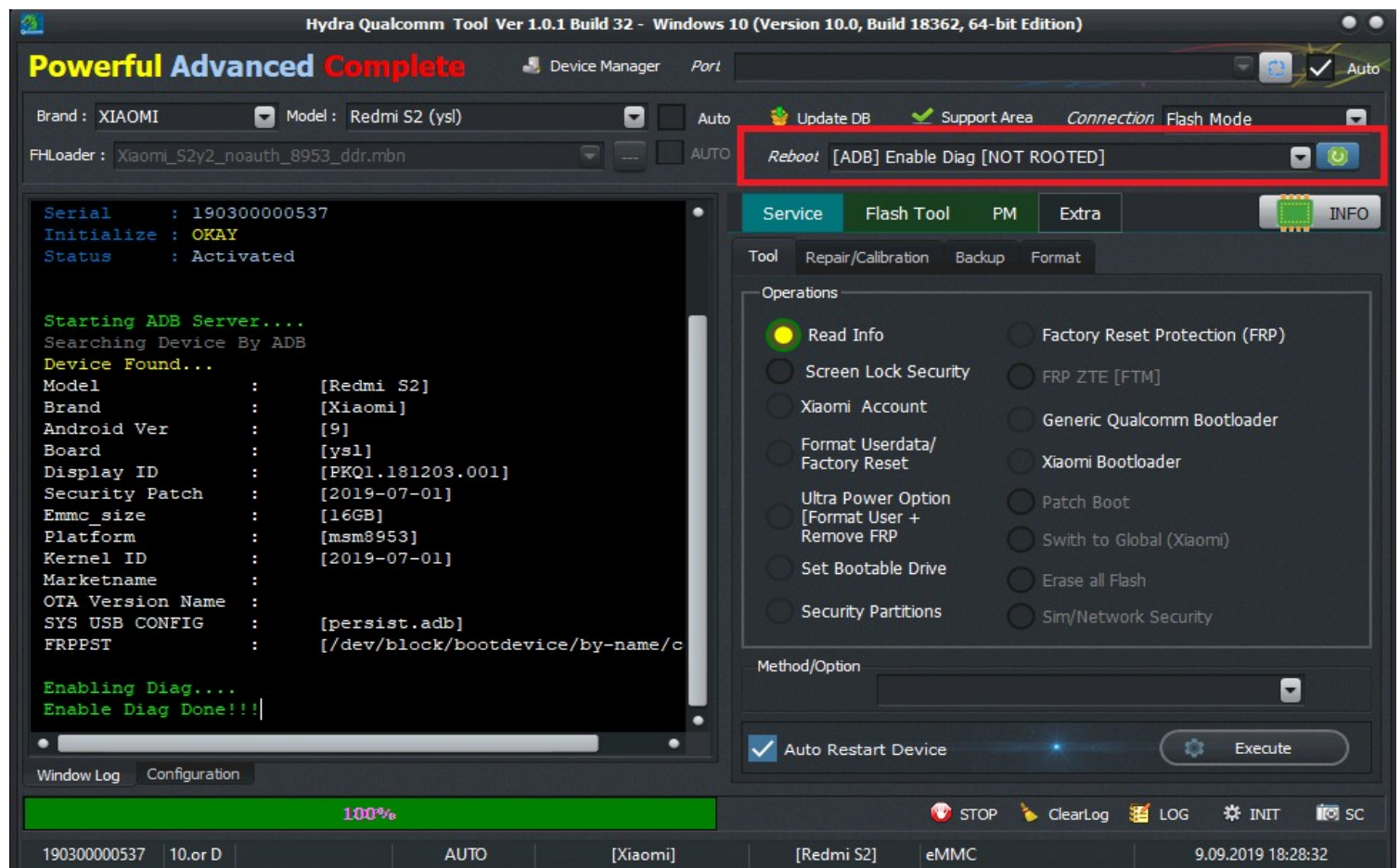
Step 2:- Under About section, you can see many options. To unlock developer options, you need to click continuously on MIUI version. Once you click 5 times, it will show a toast message as shown in the following screenshot. "You are now 3 steps away from being a developer."

Step 3:- Once you finish that, you will another toast message showing "You are now a developer" Once you see that message, your phone has successfully unlocked developer options. Now you will be able to access more settings.

Step 4:- To see the developer options, click on Settings, then click on Additional settings and you will see developer options there.

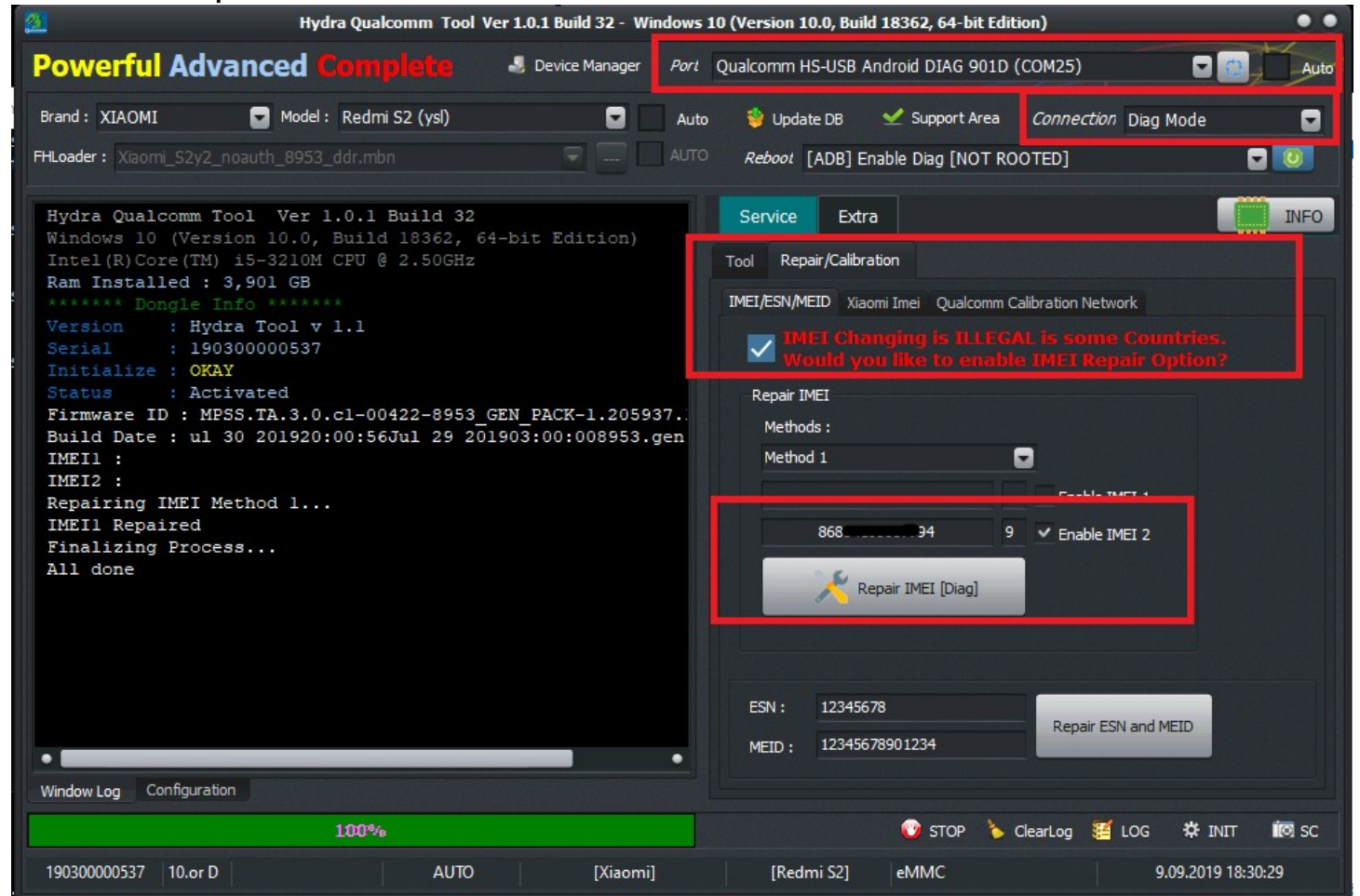
Step 5:- USB debugging is a feature inside developer options. This is required mainly you do some app development or customization of your device. You can tap it to enable or disable developer options.

After Open USB Debugging from top right Reboots box select [ADB] Enable Diag [NOT ROOTED]



**You will see Diag Driver at Device Manager, if you not see it Please Install Diag Drivers.**

After Enable Diag, From top Right change connection as Diag Mode, Go to Repair/Calibration Tab, There you will see IMEI/ESN/MEID Tab, Just Tick Enable IMEI 2, Type 14 Digt IMEI Select Diag port, and Click Repair IMEI Button.



After Repair IMEI Go to Support Area, Go to Folder of QCN/Xiaomi/Redmi S2, You will see there Enginner QCN, Download it and from Qualcomm Calibration Network Restore This QCN by Diag.

