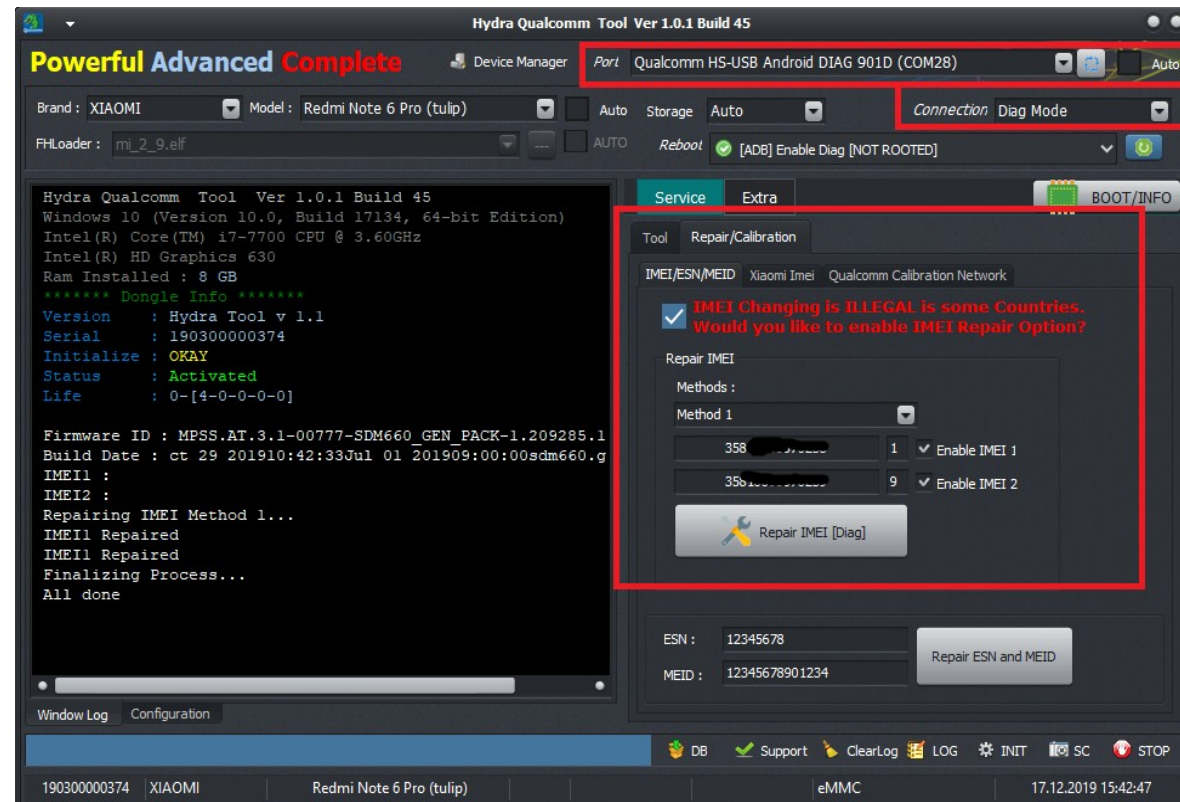


Redmi Go (tiare) Repair IMEI Guide

1 - Run Qualcomm Module, Select Brand and Model, Your device should be at EDL Mode, Go to Support Area download "Redmi_Go_Tiare_IMEI_Modem.zip" file from support, Flash it to device at EDL Mode.

2 - Open device Normally, Go to Dial screen and Dial this number : `*##*#717717#*##*`, it will enable diag On your device for Repair IMEI, From Portbox select diag Port, Fill IMEI 1 and IMEI 2 Click to Repair



3 - Reboot your device, Flash Tool tab, Put your device again to EDL Mode, You will need restore Original modem for Signal, You can see Original modem at support Area, Redmi_Go_Original_Modem.rar