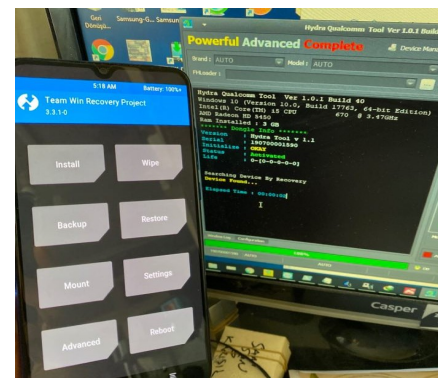
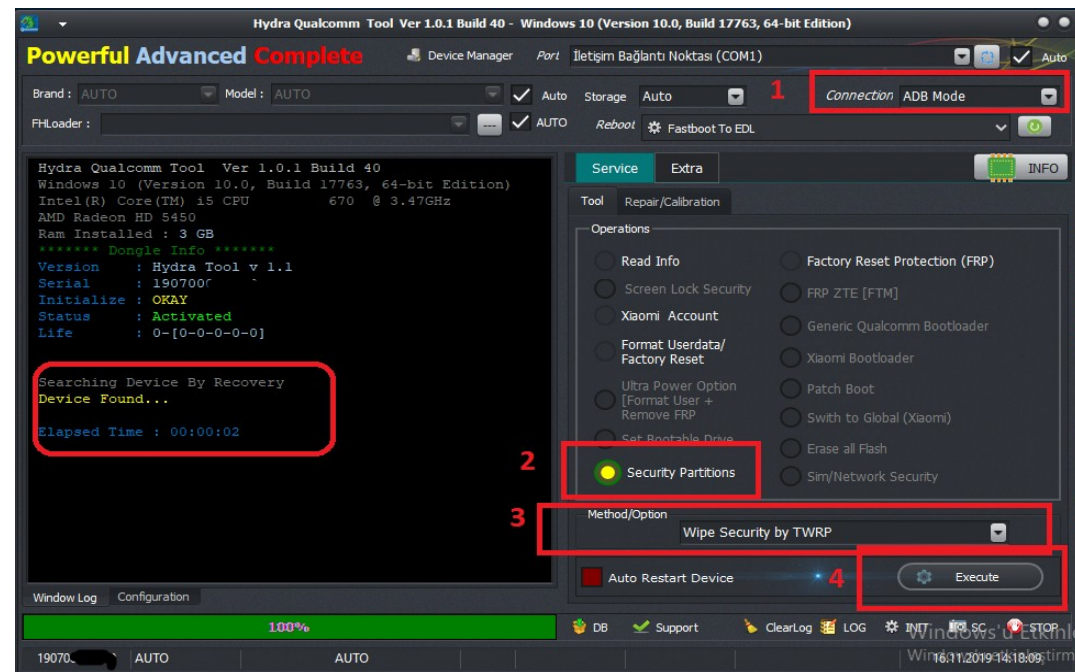


Xiaomi Mi 9 Lite (pyxis) IMEI Repair Guide

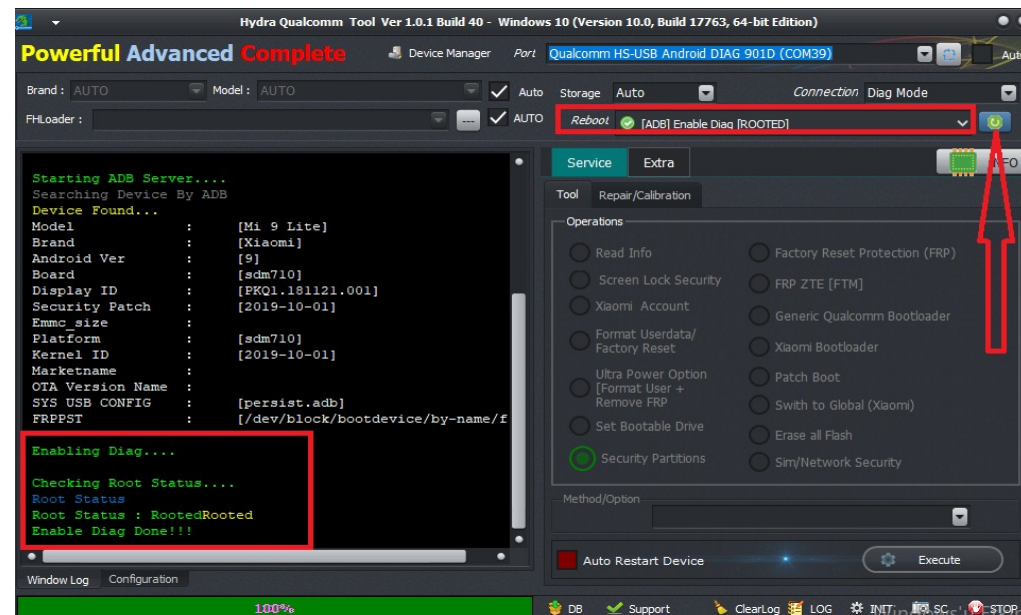
Note : Your device Should be unlocked bootloader and Rooted for This operation.

Press hold vol up and Power, Your device will gonna TWRP Mode, Then Insert usb cable to device, Go to Hydra Qualcomm Module from top right change connection as ADB Mode, Tick security options, at Method box you will see Wipe Security by TWRP Option, You can see at picture :

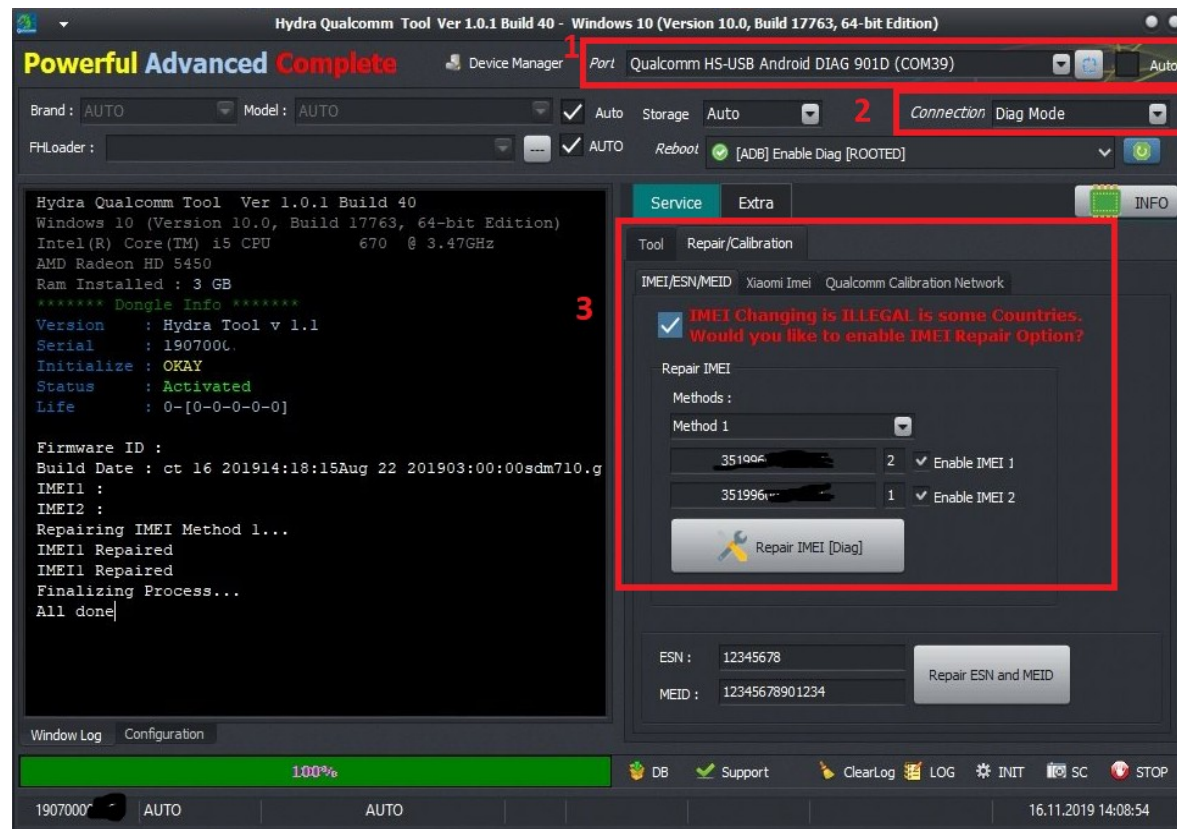


Your device will wipe security / EFS, Just reboot device as normally, and enable usb debug and connect usb cable

From Reboots Tab Select "[ADB] Enable Diag [ROOTED]" Method then Click Button



This Option Will enable your Diag Port, Then from top right Change connection as Diag Mode, Go to Repair/Calibration Tab, Go to IMEI/ESN/MEID Tab, Tick IMEI illegal box and accept terms from top right chose diag port, Enable IMEI 1 and IMEI 2 Fill the IMEI box and Click to Repair.



Go to Support Area download engineer qcn and write it to by QPST, You can see QPST Tool at our support area, open QPST Tool and click to add new ports, Path of this at support area QCN/Xiaomi/Mi 9 Lite/ download the Mi_9_Lite_xqcn.zip, and unzip it Add Port number of Diag, Server Clients Software Download Then go to Restore Tab Select xqcn then Click Restore

